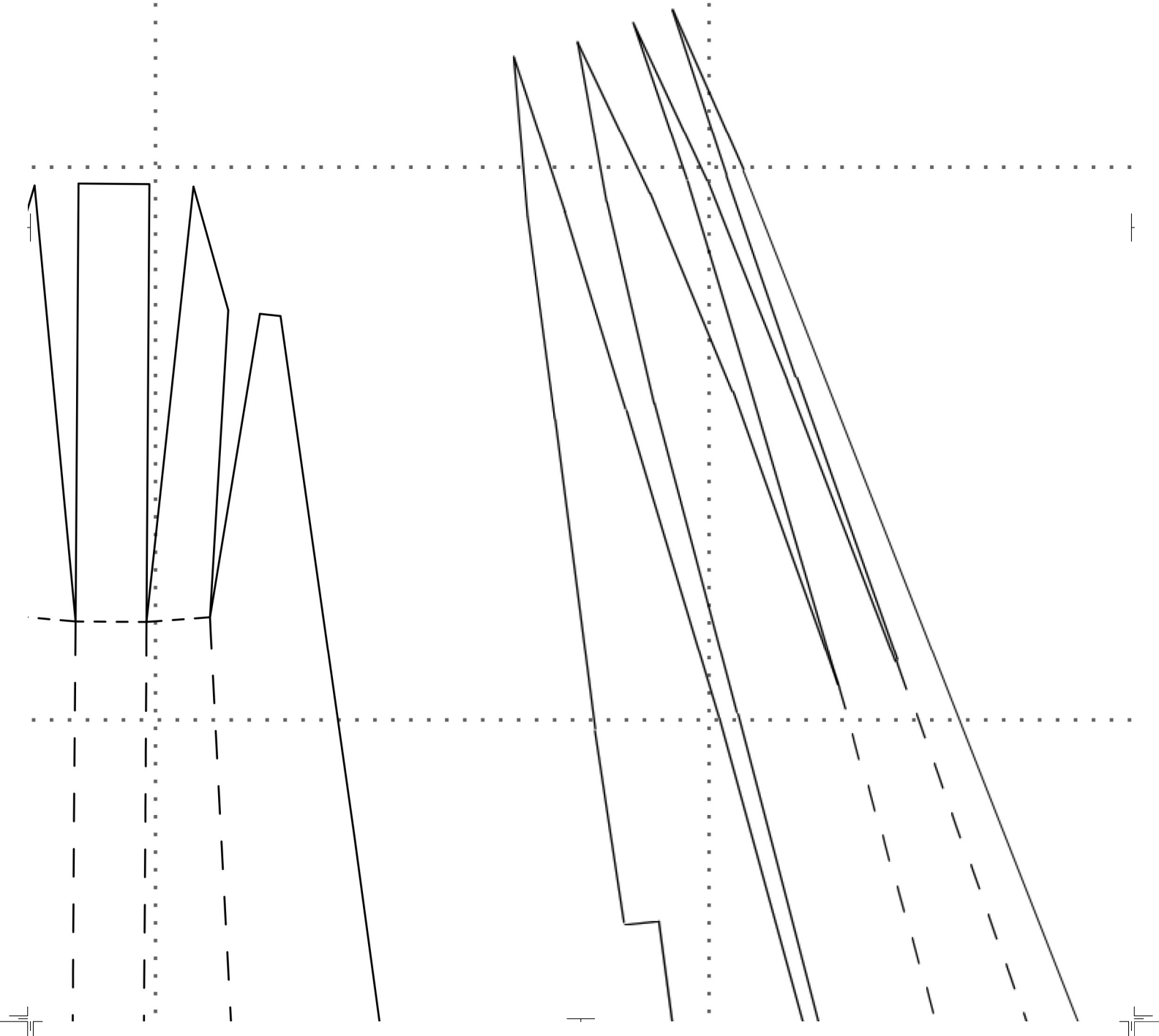
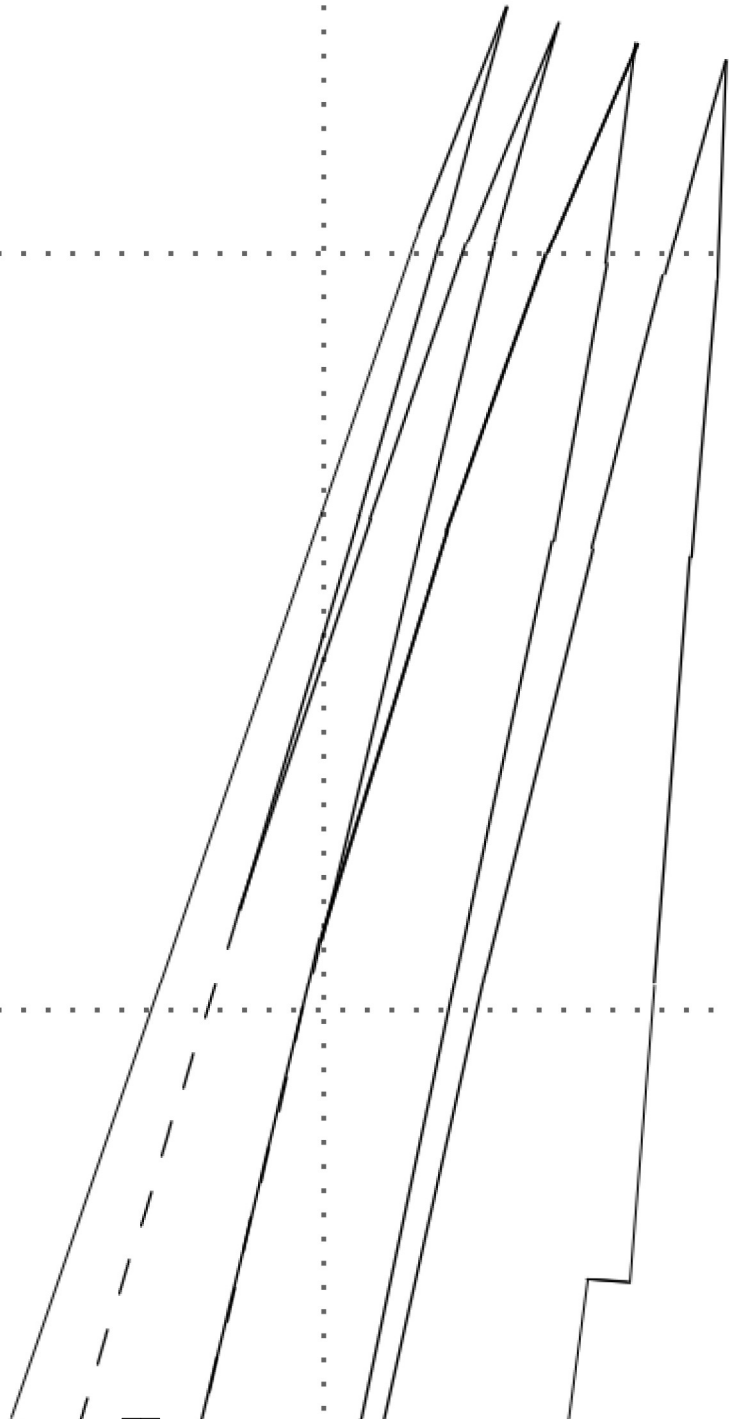
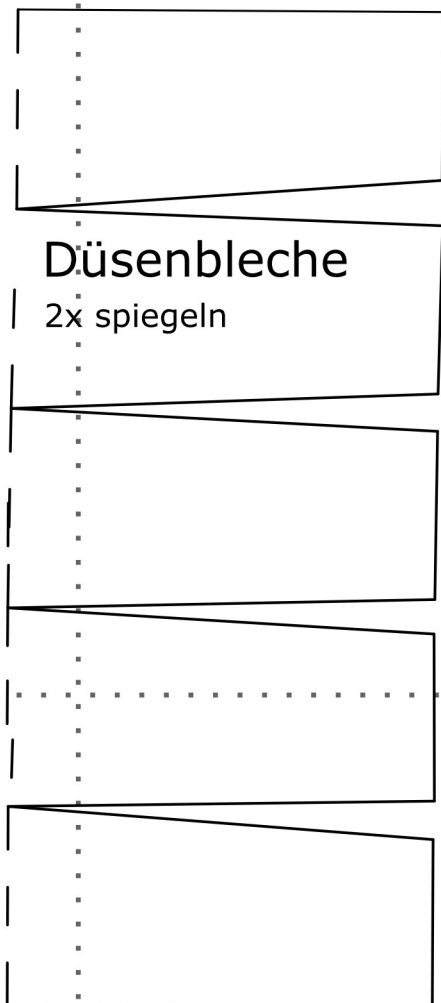
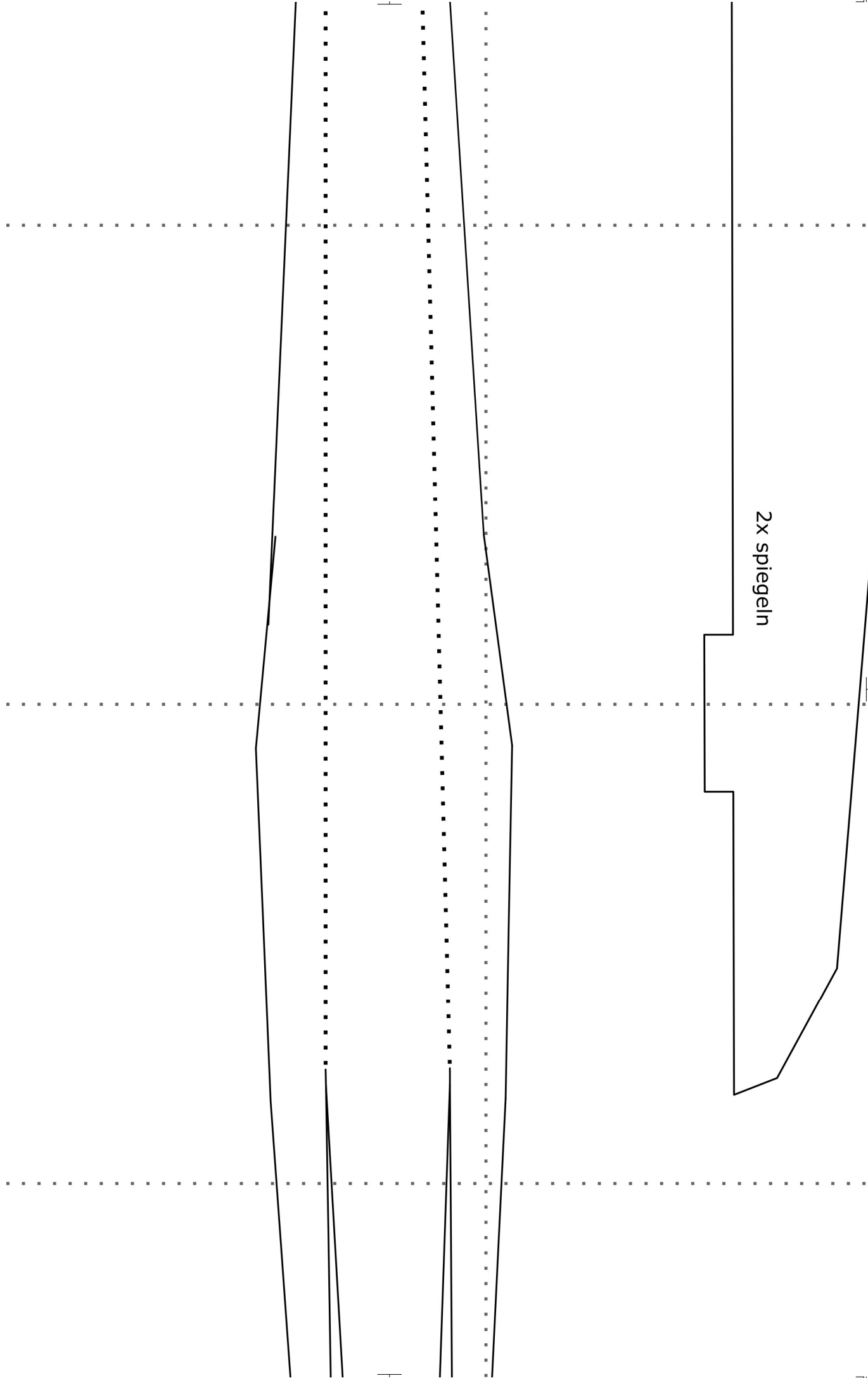


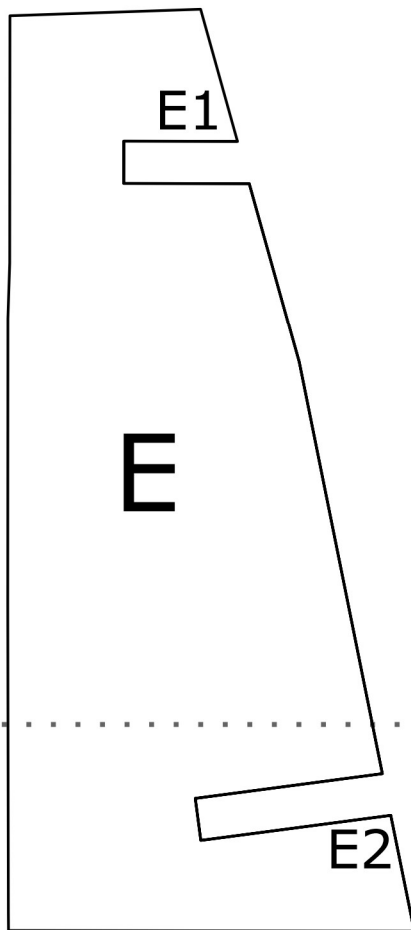
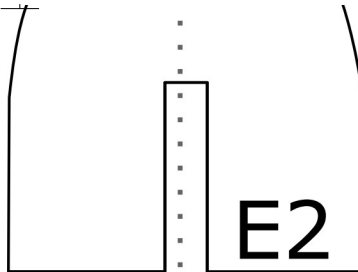
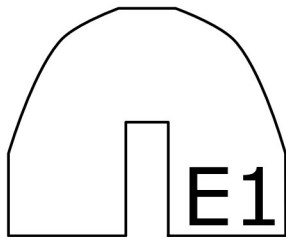
liG-29C Fulcr



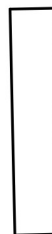
'um "Falke"



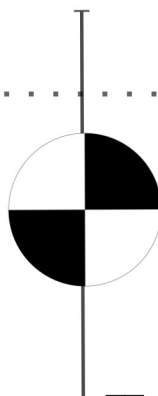




D

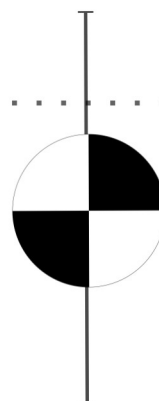


B



iebwerksschächte (Unterseite)

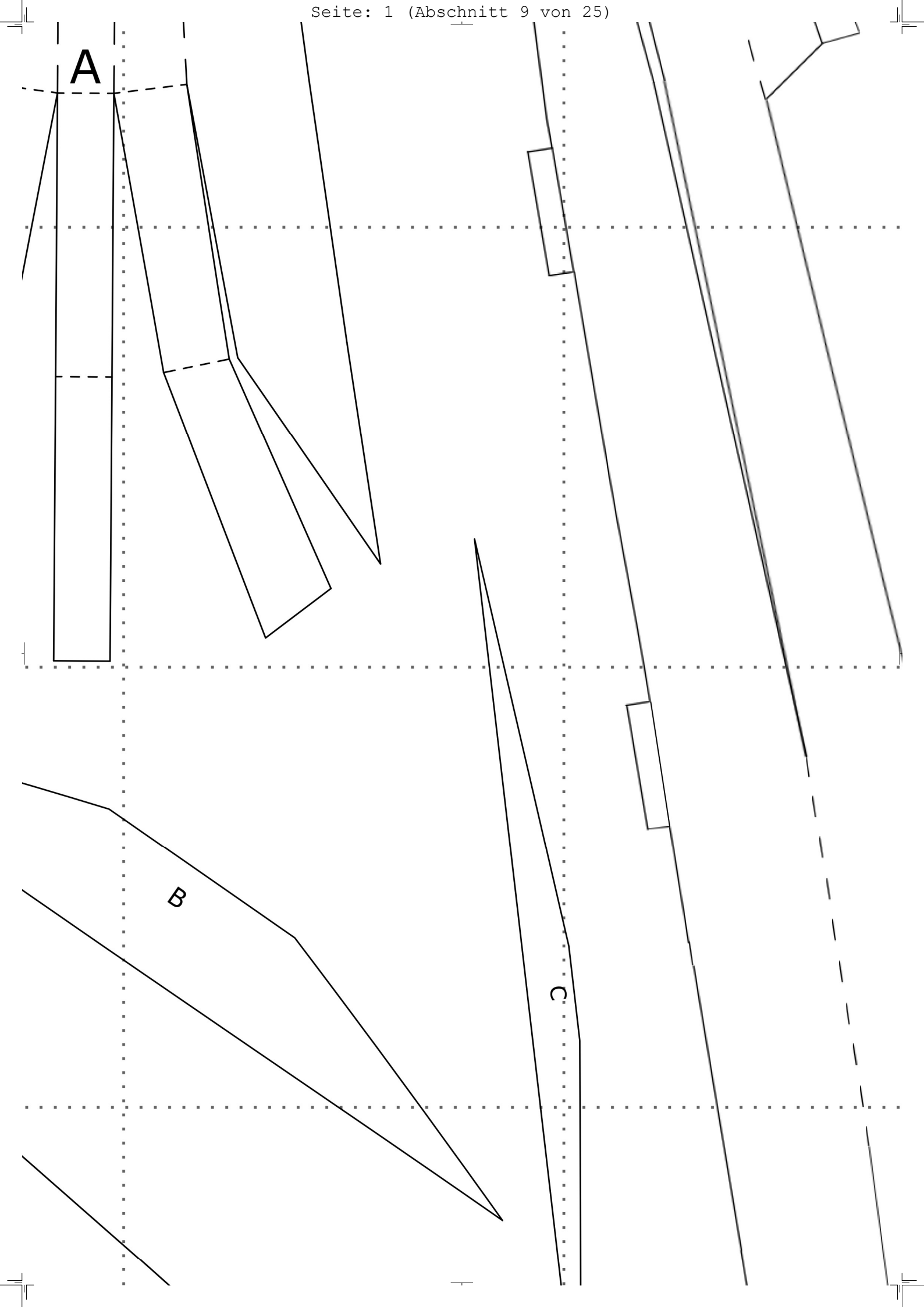
Verlauf der Triebwerkschächte



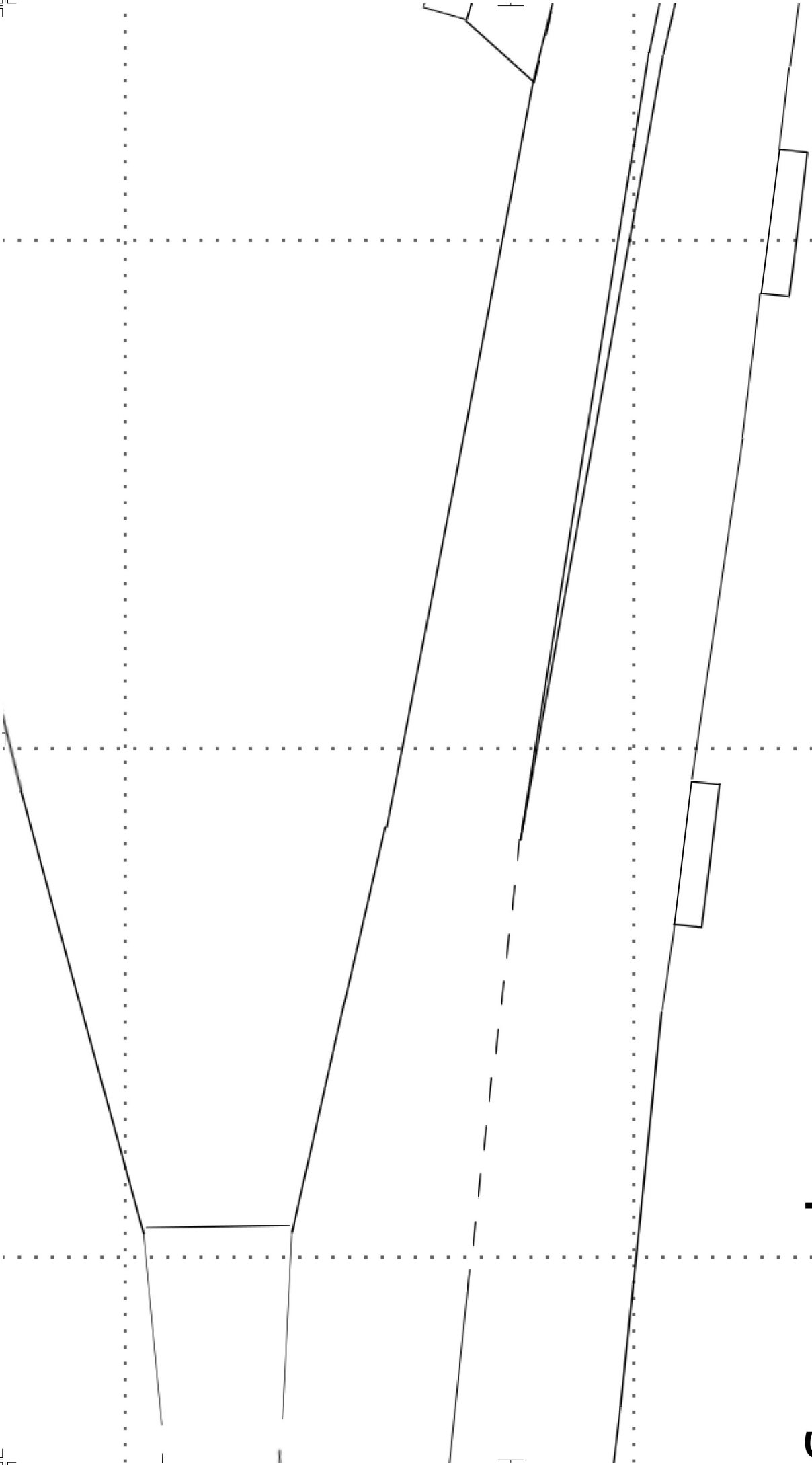
A

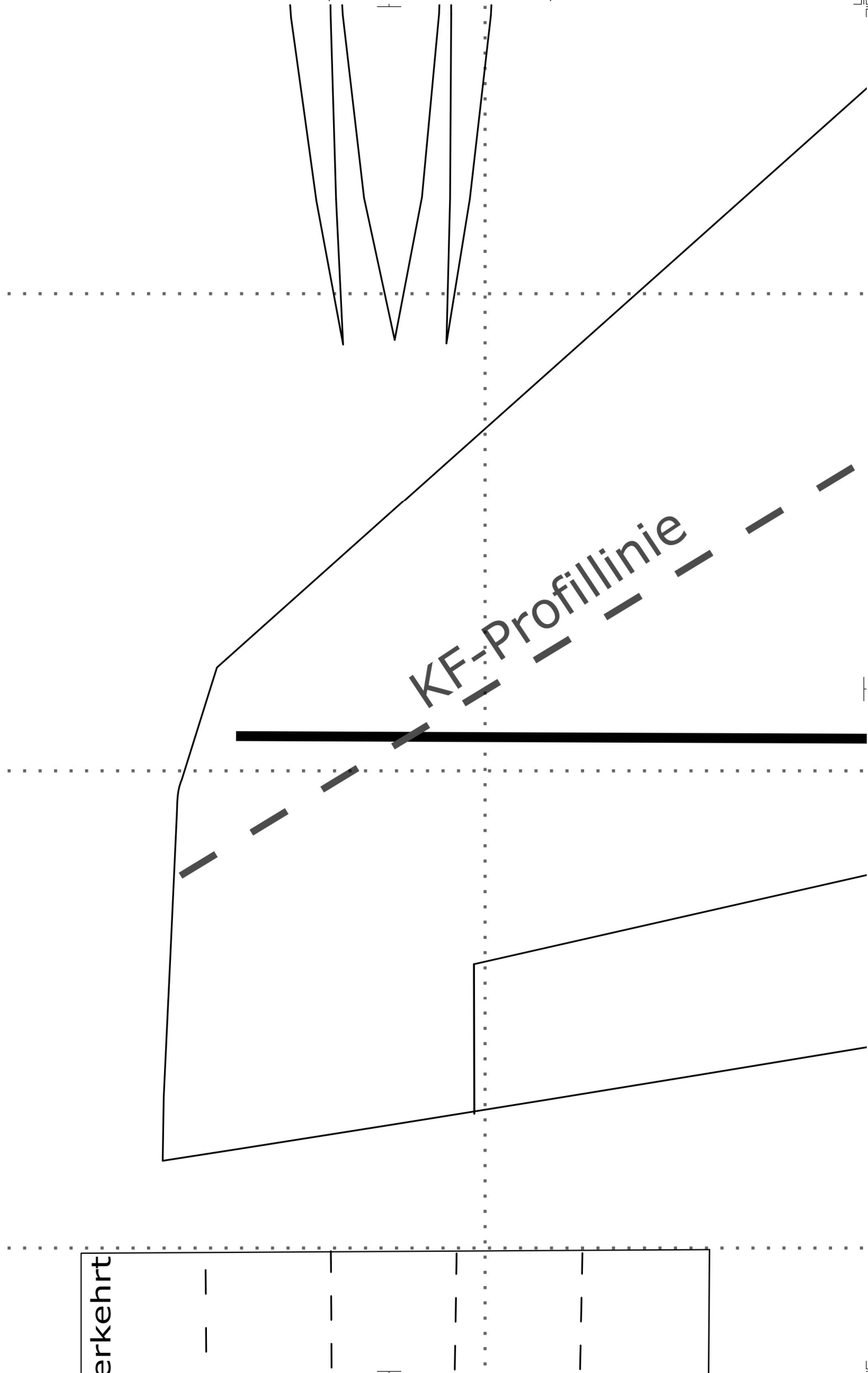
B

C

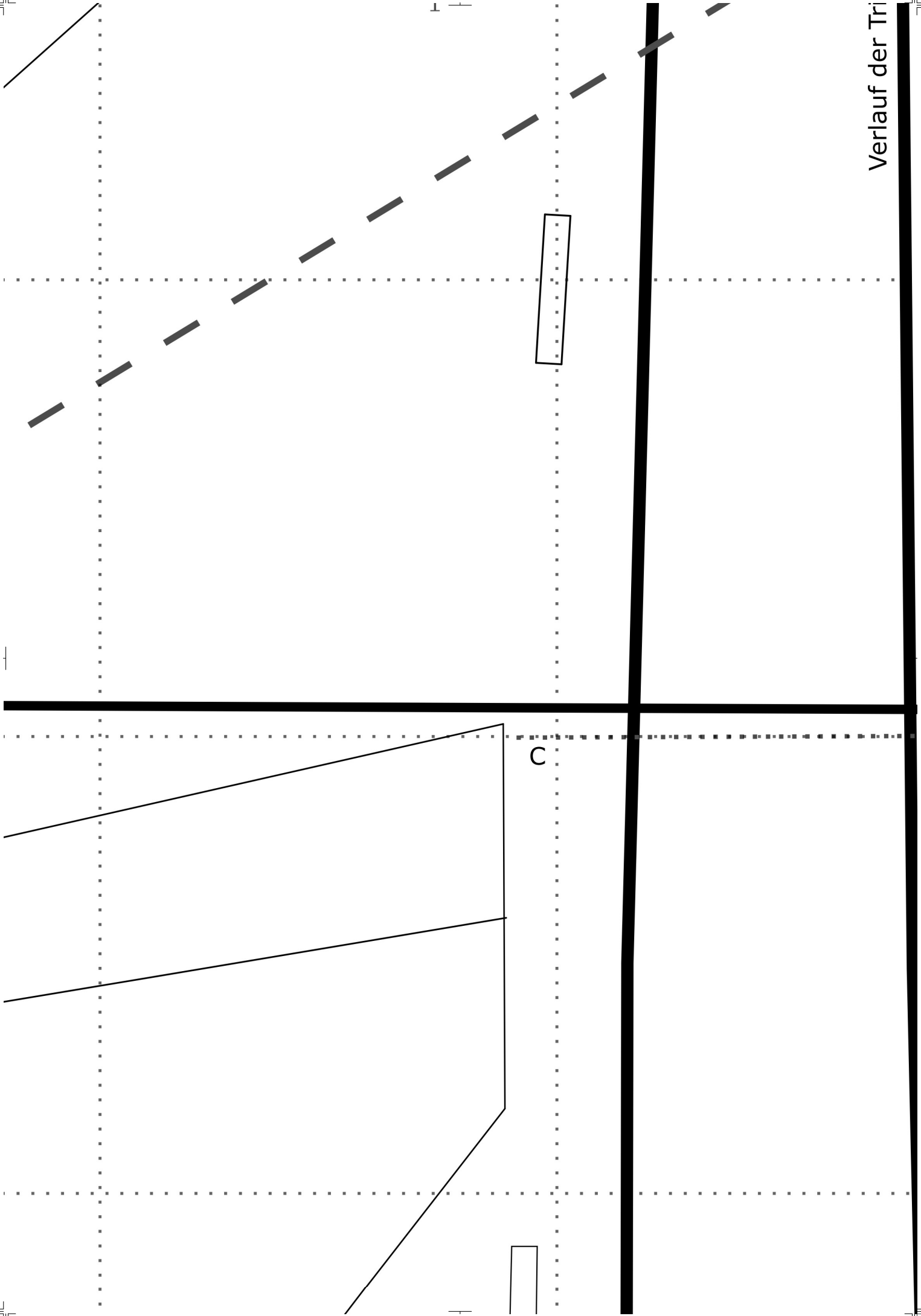


Beim Drucken "Seitenanpassung"

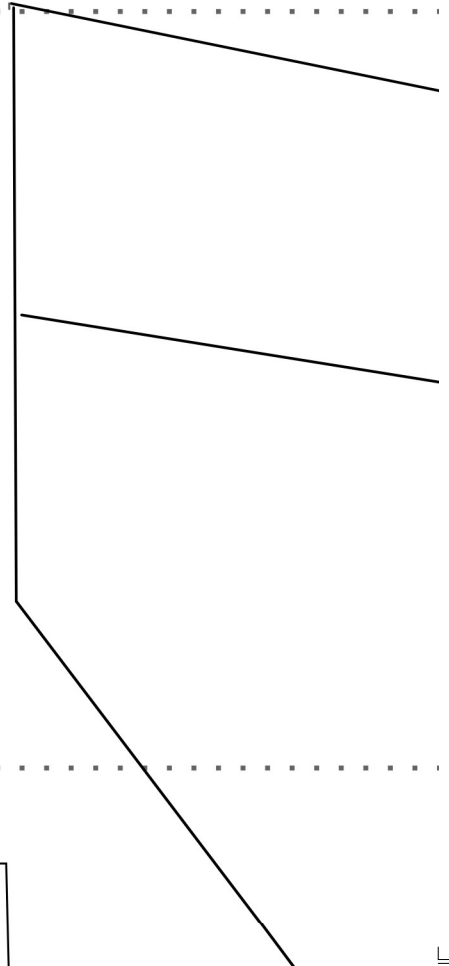


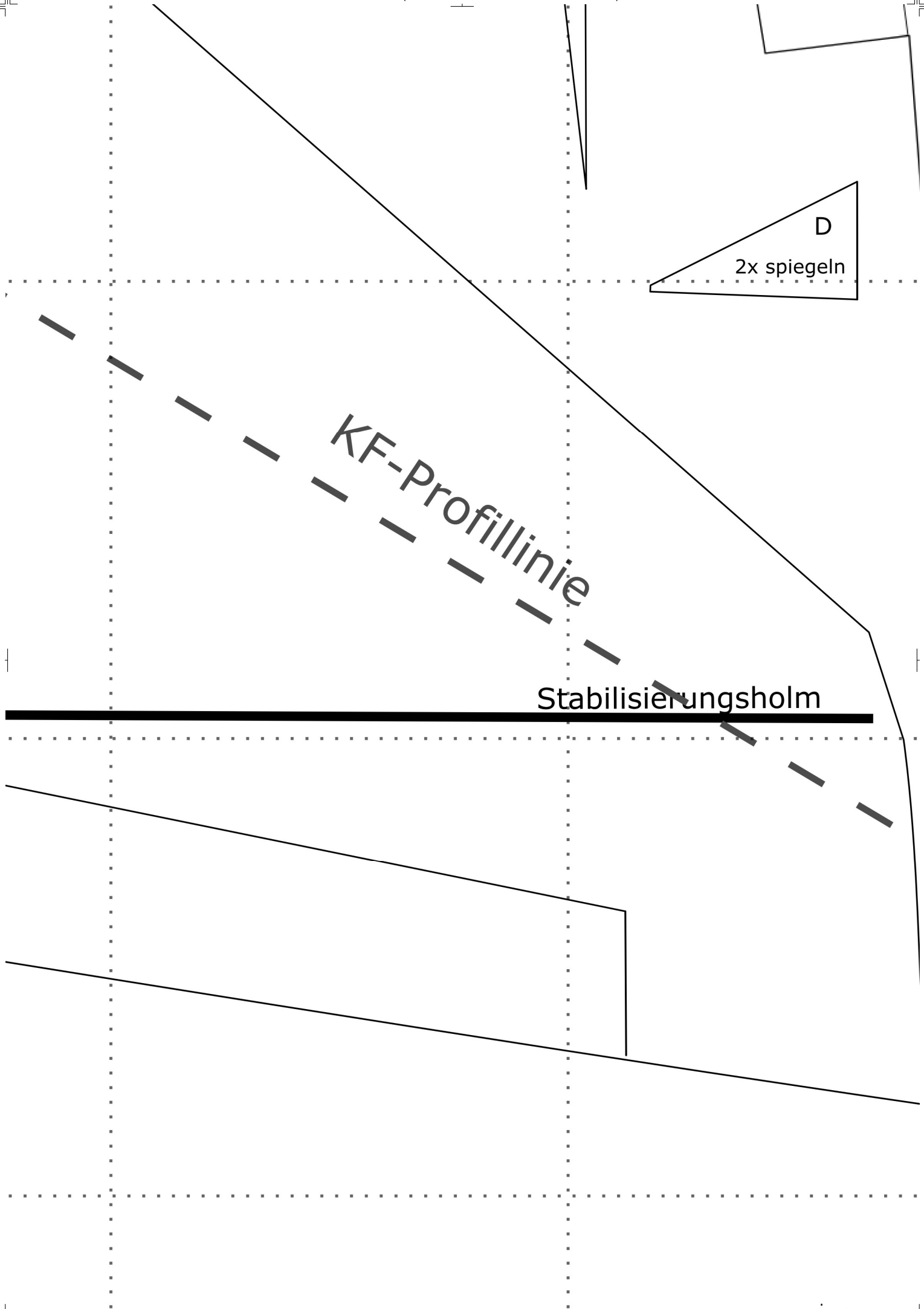


Verlauf der Tri



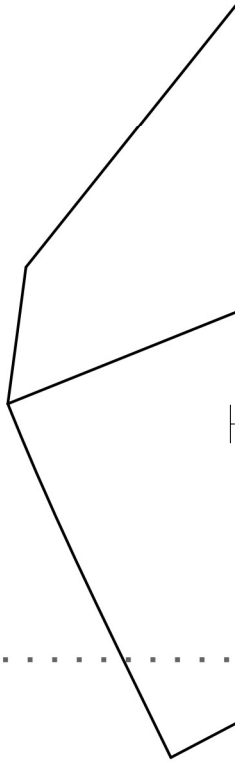
e (Unterseite)

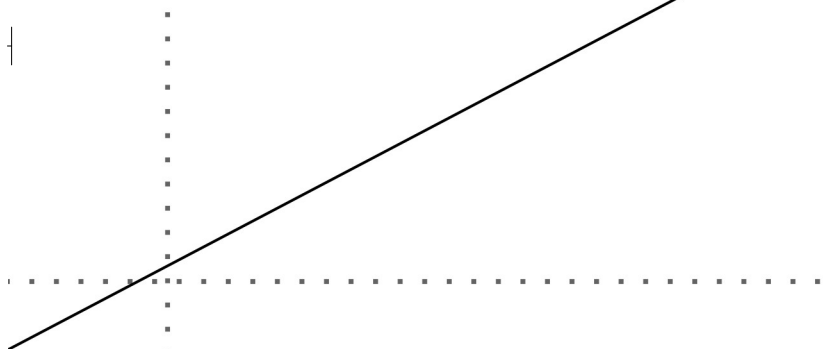
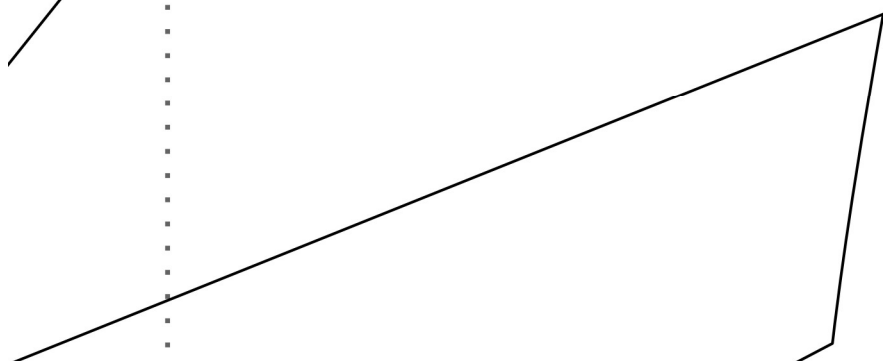
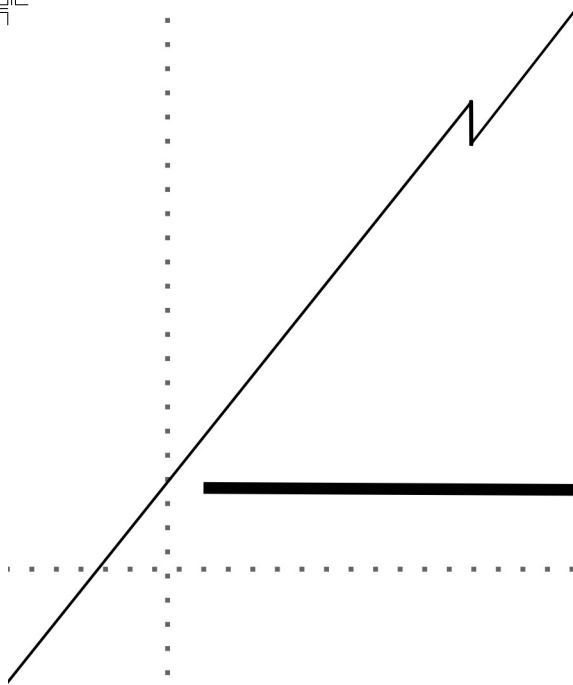




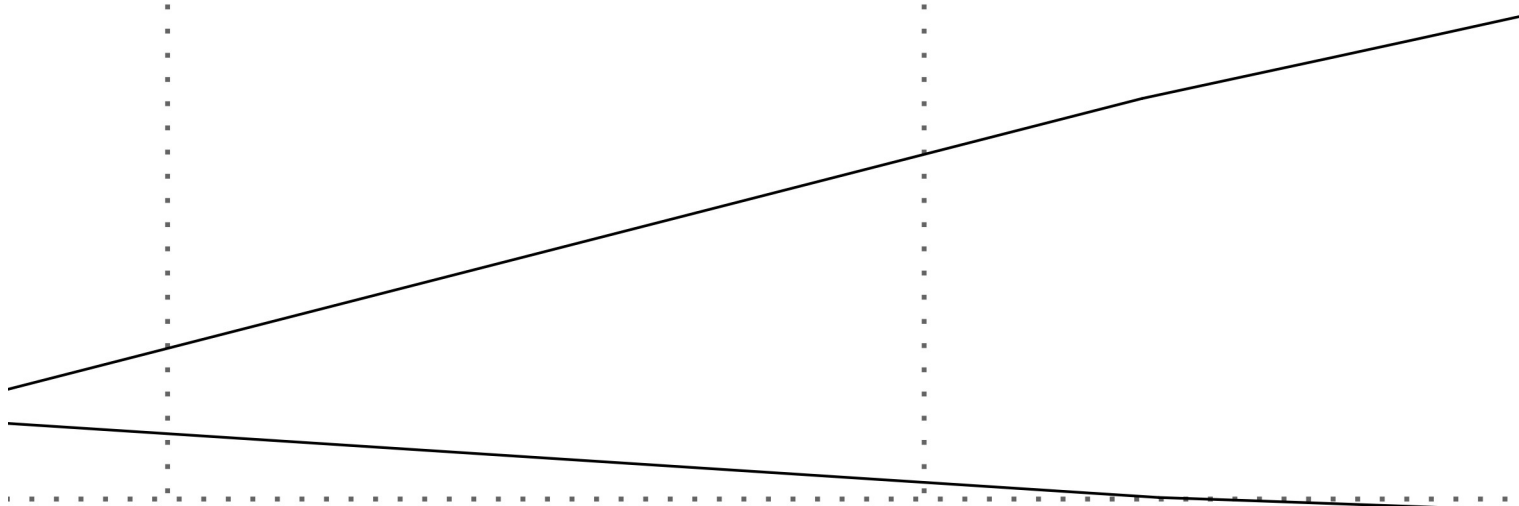
| : Keine" angeben.

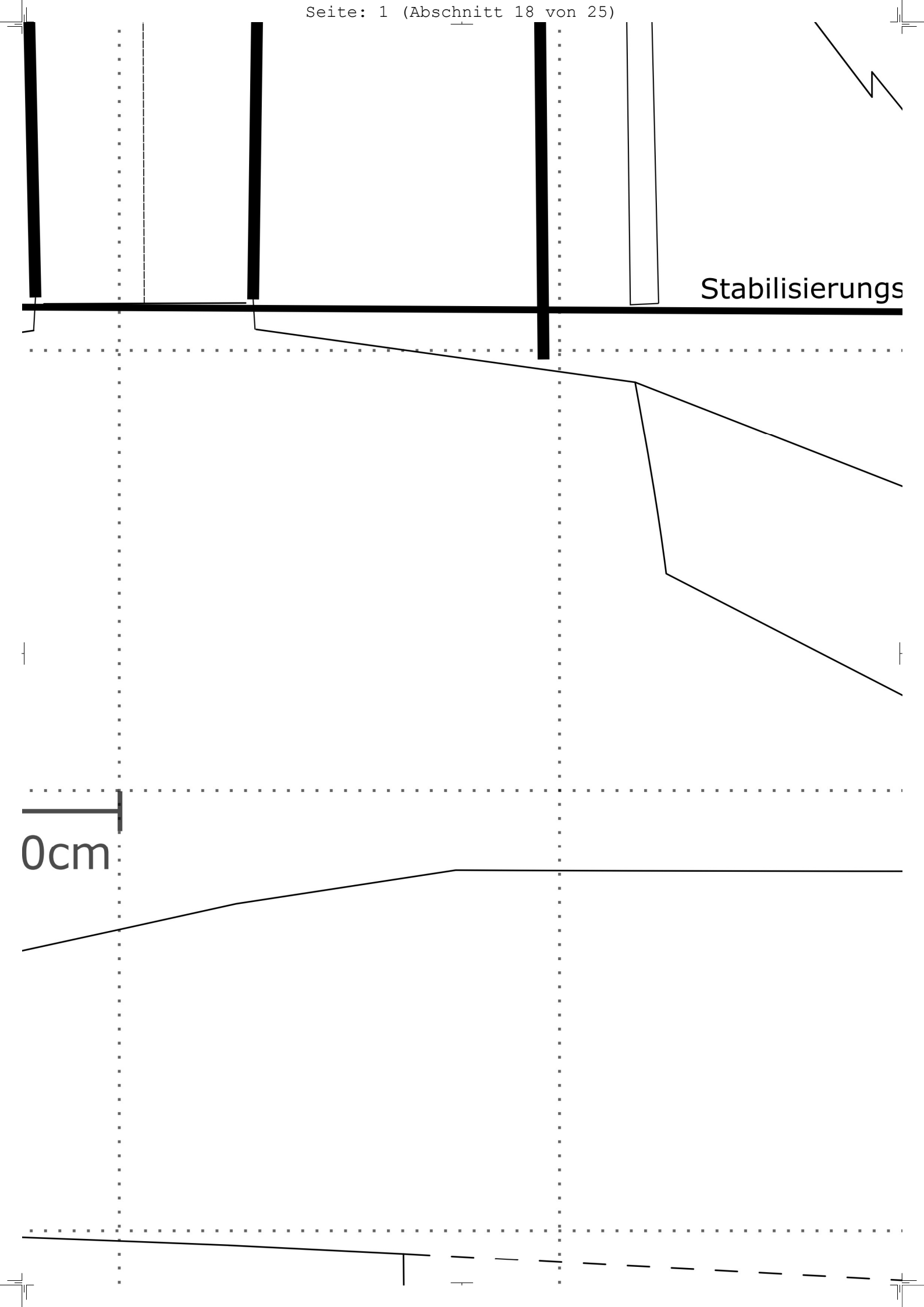
2x spiegelve



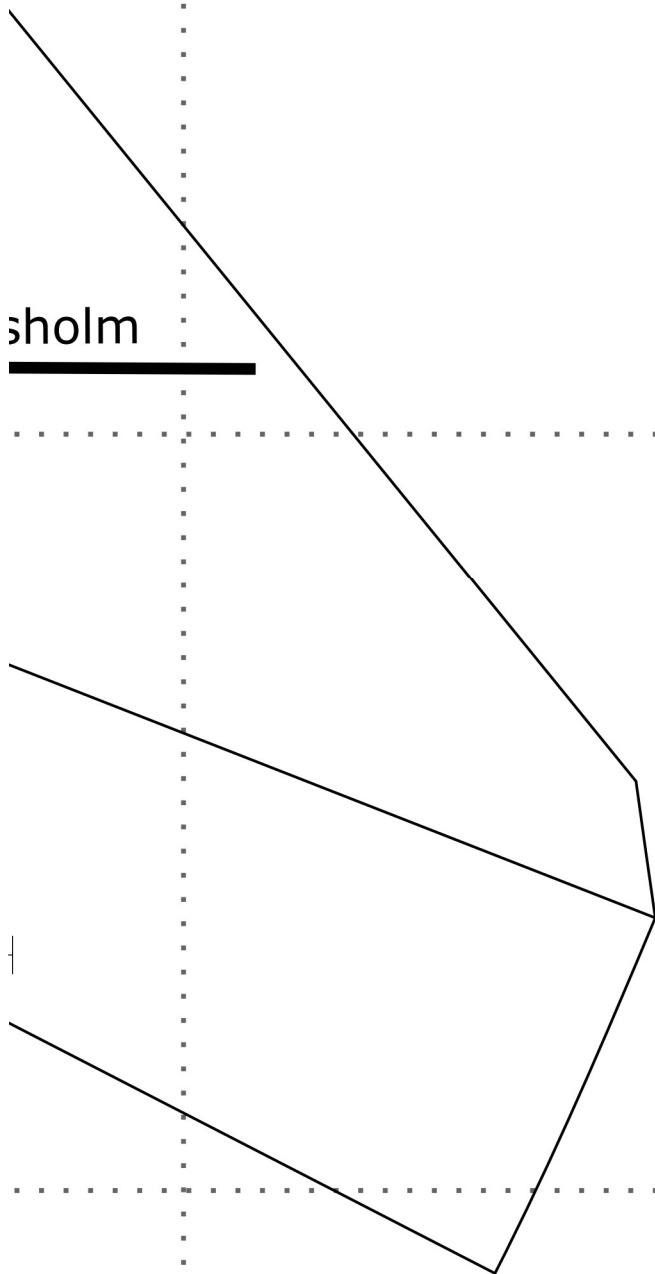


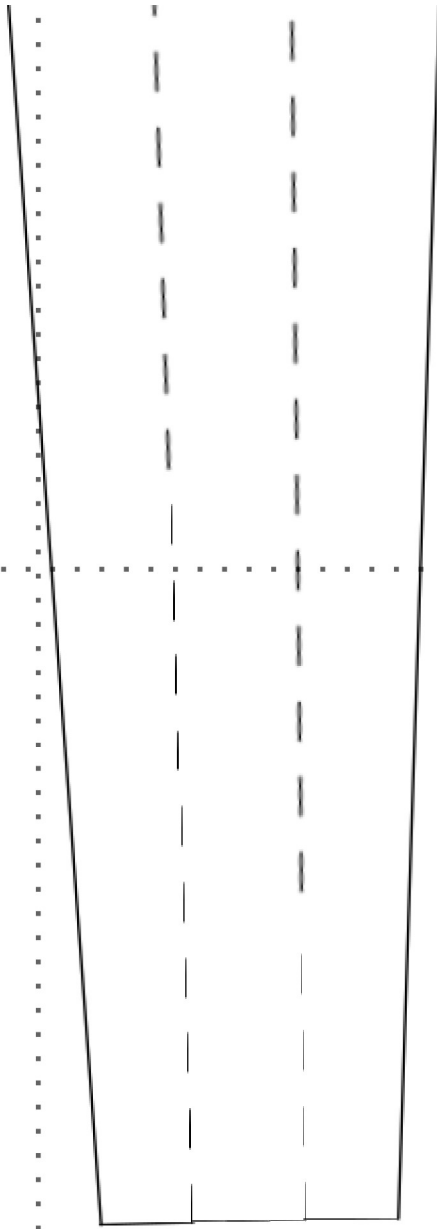
1 Kästchen \triangleq 10



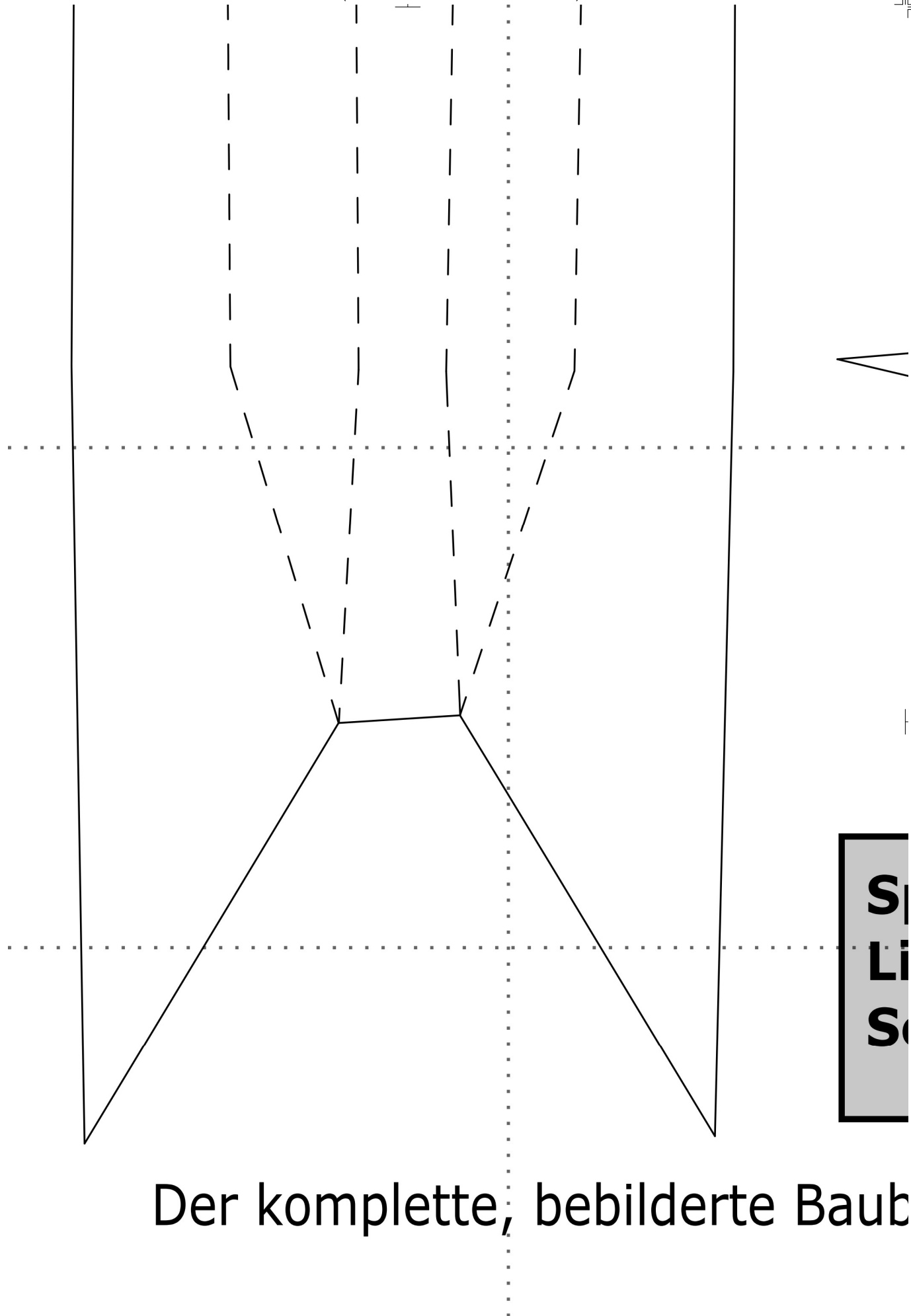


sholm

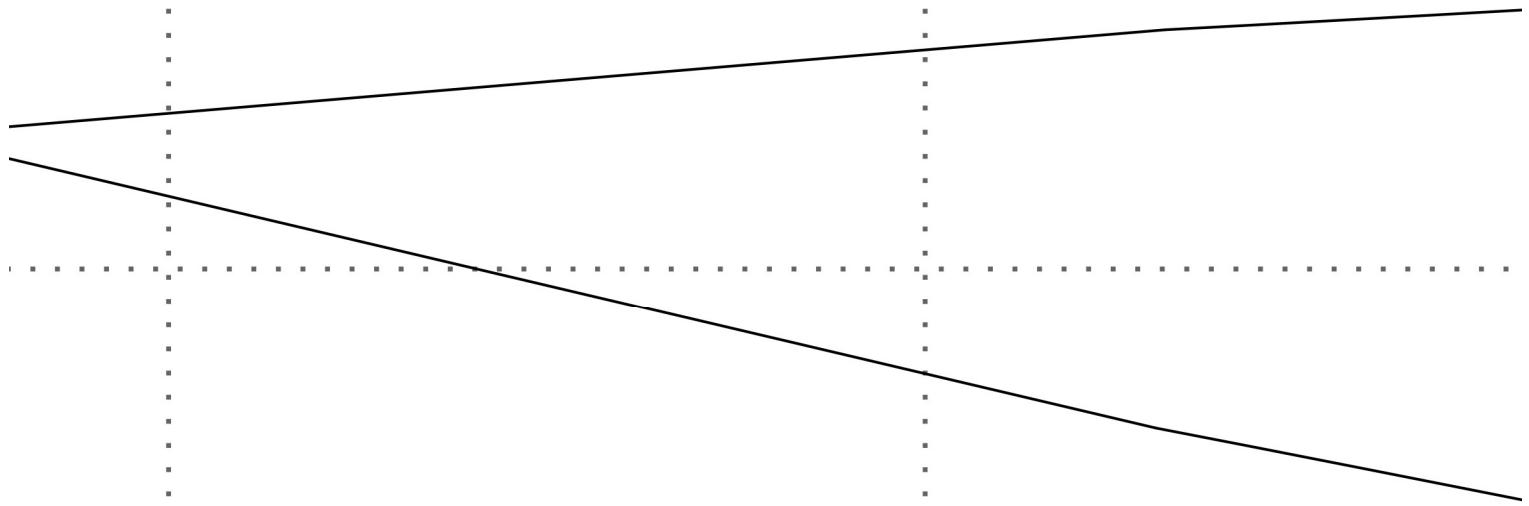




erstand zum anpassen



Der komplette, bebilderte Baub



Spannweite: 800mm

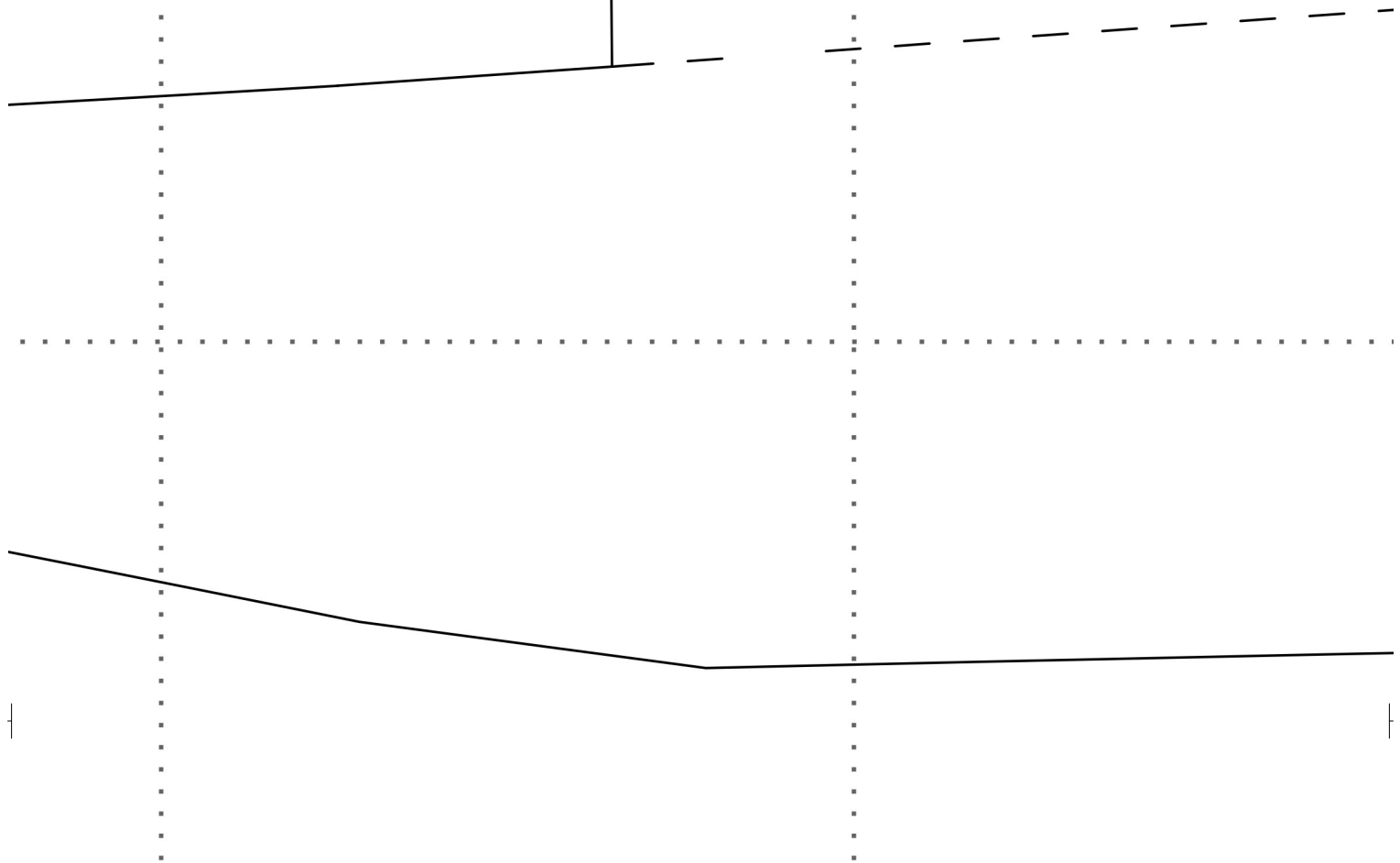
Länge: 115

Batterie: 3S 2200mAh

Motor: 2050

Servos: 4-6 (Seitenruder lassen sich nach

bericht (von der Planung bis zum Testflug



50mm

Gewicht: ca. 790g (lackiert)

0KV, 52g
(nürsten)

Luftschraube: 6x4 APCE o. v

) ist unter **www.depronjets.de** zu finde



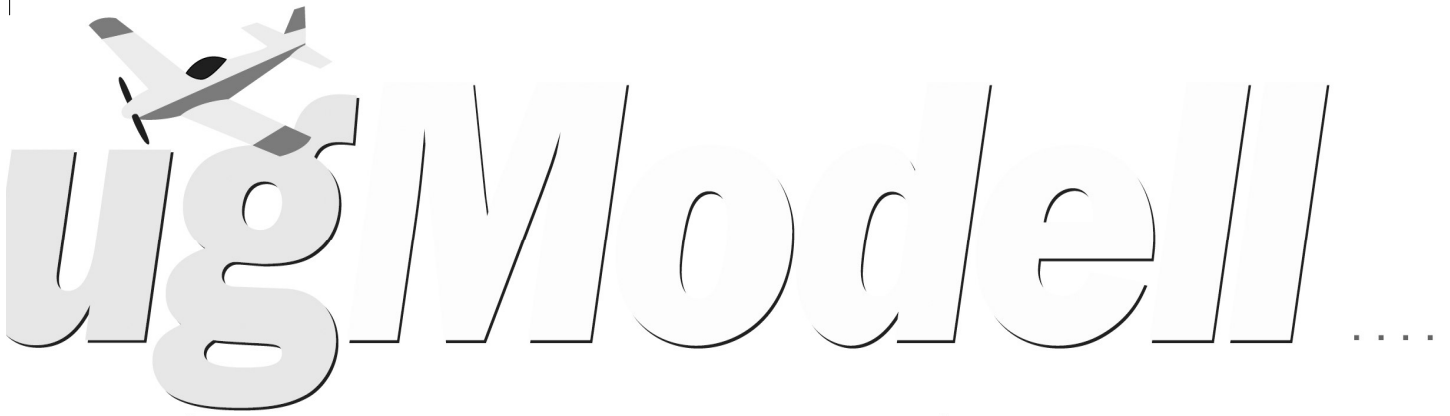
Konstrukteur: Patrick Klauke

Copyright: 11/2023



FlugModell-Downloadpläne sind Bestandteil
private Zwecke zu nutzen. Für die gewerbl
Teilen davon ist eine Genehmigung durch c

Übe



il des Magazins und nur für
liche Herstellung der Bauplanmodelle oder von
den Verlag Wellhausen&Marquardt erforderlich.