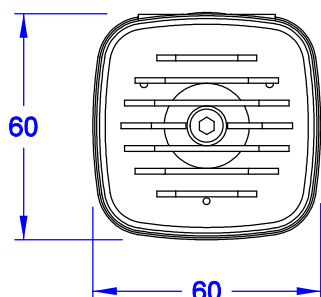
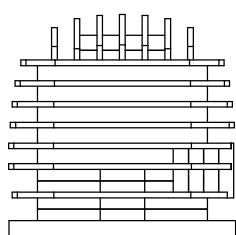
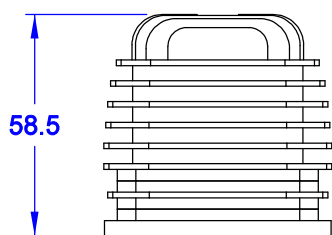


# Benzinmotor- Zylinderkopfattappe

in leichter Holz-Scheibenbauweise  
Konstruktion: Hilmar Lange

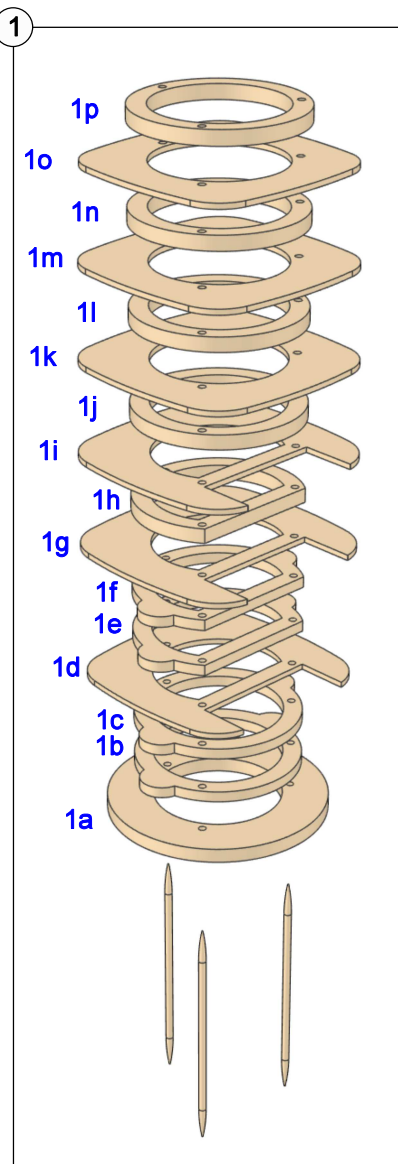
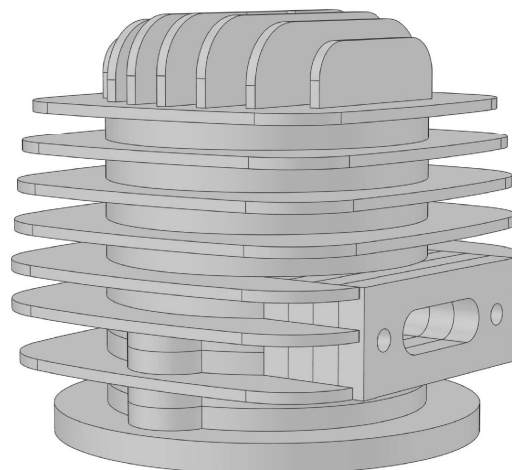


## Benötigtes Material:

Balsa 1,5 mm (450 x 100 mm)

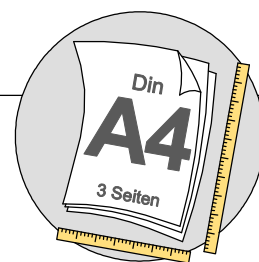
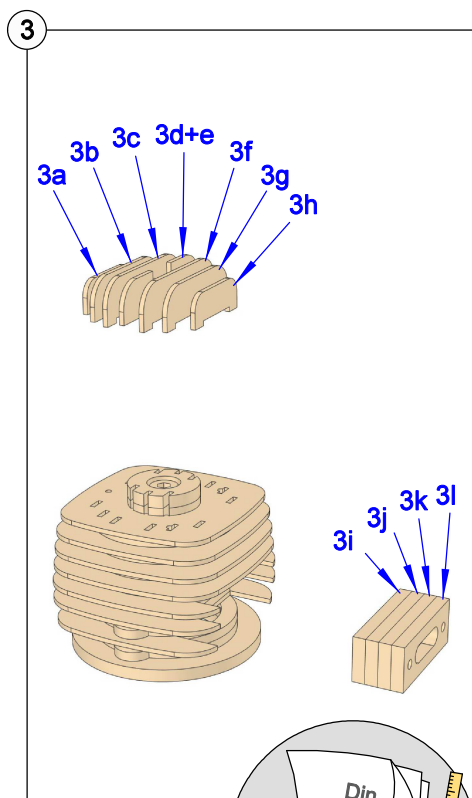
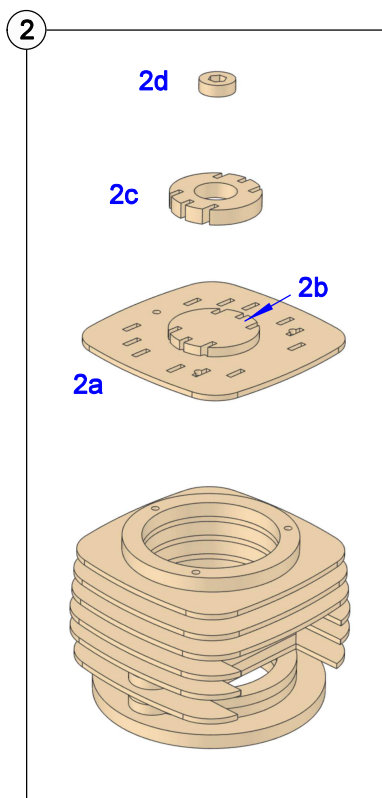
Balsa 3 mm (150 x 100 mm)

Balsa 4 mm (250 x 100 mm)

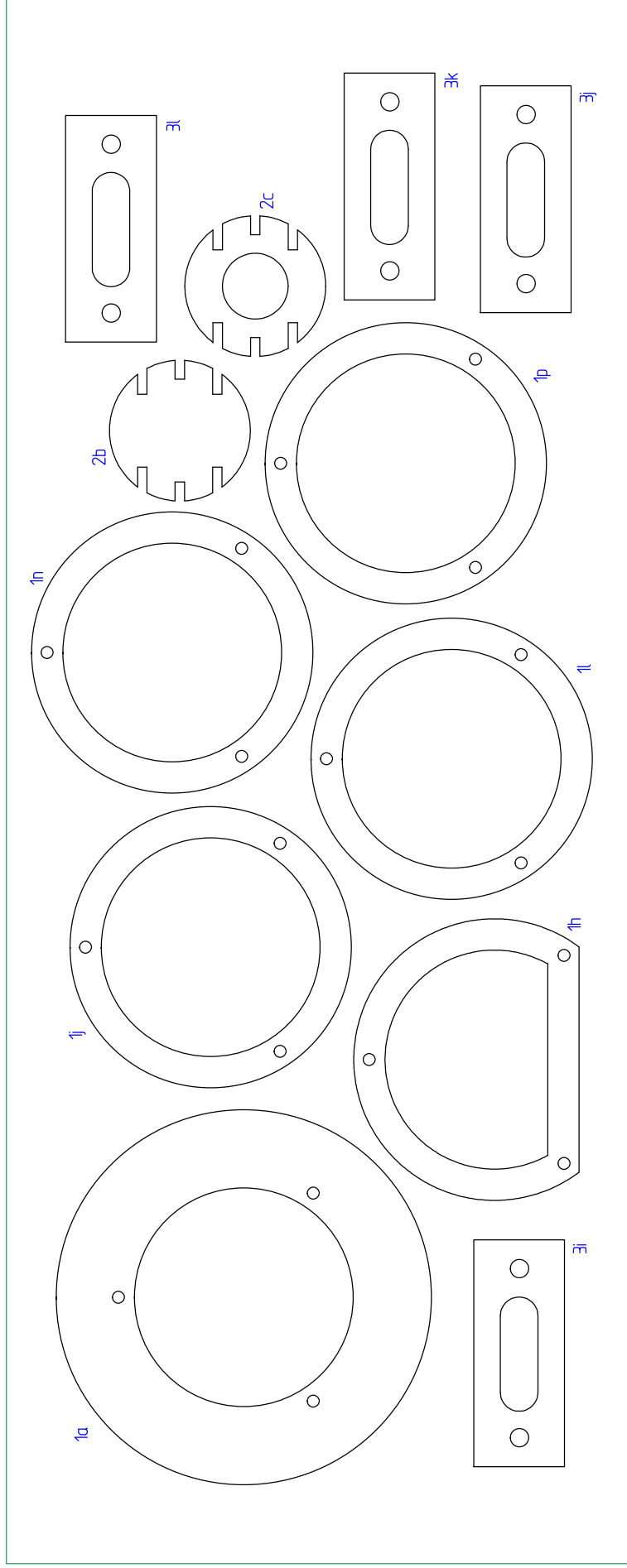


Um die Einzelteile exakt aufeinander zu positionieren, werden sie auf drei Zahnstochern o.ä. (Ø 2 mm) aufgefädelt.

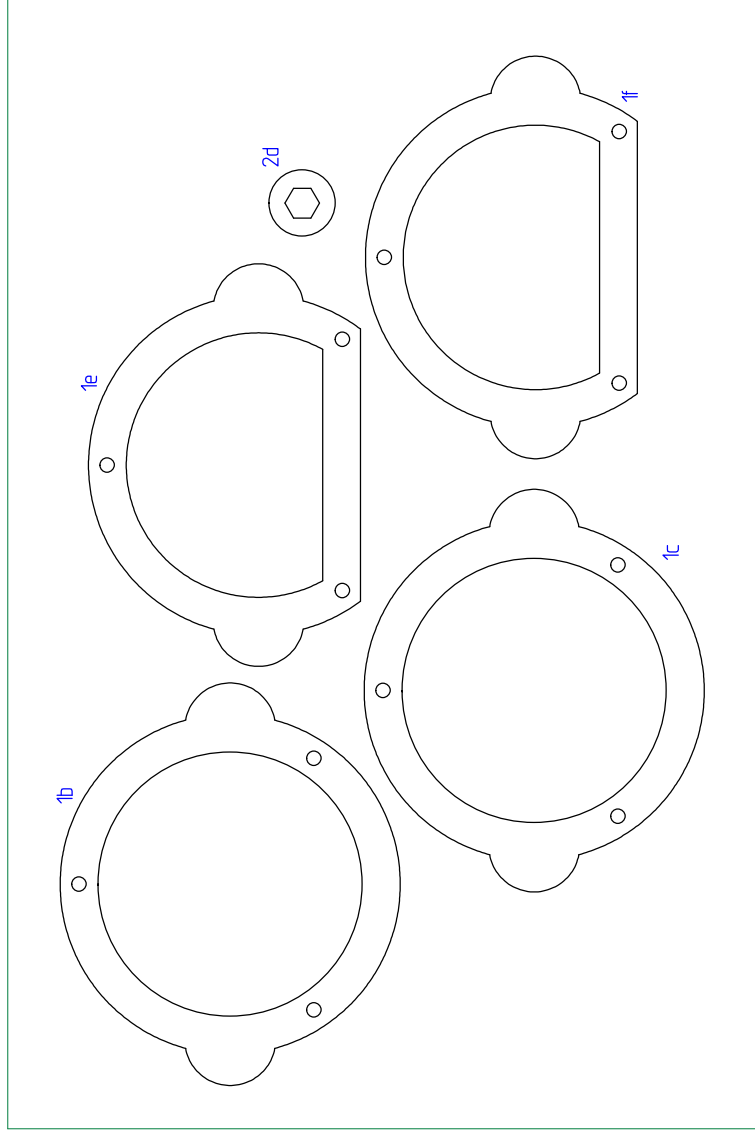
*In order to position the individual parts exactly on one another, they are threaded onto three toothpicks or similar (Ø 2 mm).*

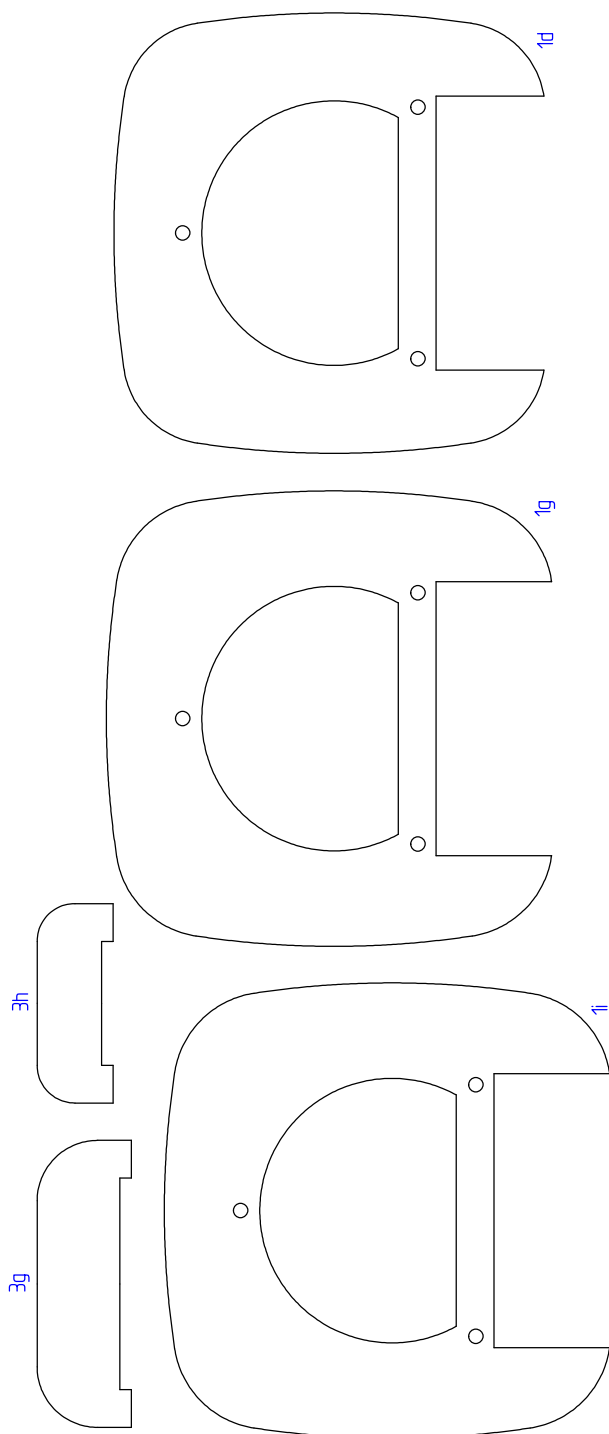


## 4 mm Balsa (250 x 100)



## 3 mm Balsa (150 x 100)





## 1,5 mm Balsa (450 x 100)

